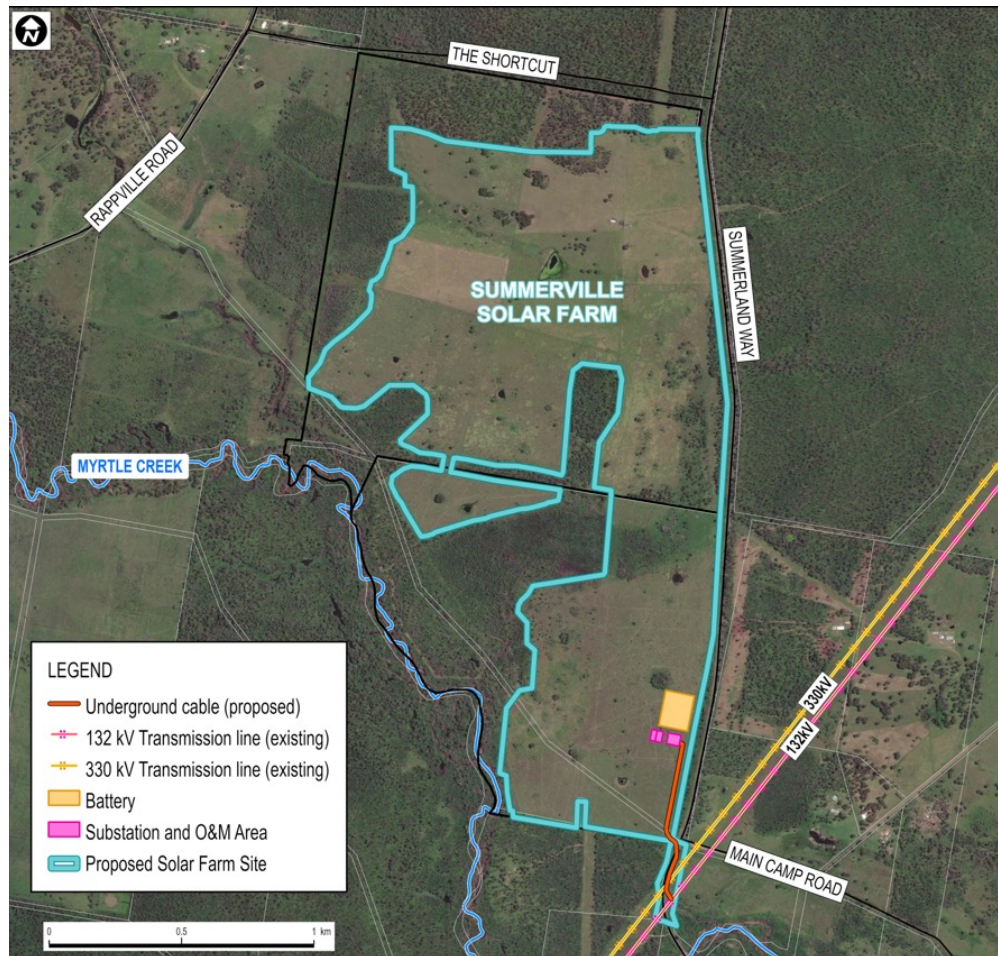


# SUMMERVILLE SOLAR FARM

## ABOUT THE PROJECT

ESCO Pacific proposes to develop a large-scale solar photovoltaic (PV) generation facility, battery energy storage system and associated infrastructure to be known as the Summerville Solar Farm. The 240ha site is located just over 3km east of Rappville and approximately 24km south of Casino, NSW.

**The Summerville Solar Farm is proposed to comprise the installation of approximately 215,000 solar PV panels and will have a generating capacity of up to 90 MWac. The battery has a proposed capacity of up to 360 Mwh.**



## ABOUT ESCO PACIFIC

ESCO Pacific is a leading Australian developer and asset manager of utility scale solar farms. ESCO Pacific has a proven track record, delivering to market over 493MWdc of operational solar generation (Ross River Solar Farm, Childers Solar Farm and Susan River Solar Farm in QLD and Finley Solar Farm in NSW) with a further 310 MWdc currently under construction (Moura Solar Farm (QLD), Wyalong Solar Farm (NSW) and Glenrowan Solar Farm (VIC)).

## THE PROCESS

Applications for large scale renewable projects in New South Wales are assessed by the Department of Planning and Environment (DPE). To proceed, ESCO Pacific will be required to submit a Development Application (DA) supported by an Environmental Impact Statement (EIS) to the Minister for Planning. Project information submitted to DPE is available at:

<https://www.planningportal.nsw.gov.au/major-projects/projects/summerville-solar-farm>

An indicative timeframe for the project is set out below.

Scoping Report submitted to DPE – Q2 2022

DA and EIS submitted to DPE – Q1 2023

EIS on exhibition for public submissions – Q1 2023

Determination – Q3 2023

Construction – Q3 2024 to Q3 2025

Operation – Q3 2025



Finley Solar Farm, NSW

## COMMUNITY BENEFITS AND BUSINESS OPPORTUNITIES

ESCO Pacific has a strong track record of delivering lasting social, environmental, and economic benefits to the local communities in which our projects are located. Community benefits associated with the Summerville Solar Farm include:

- ✓ Creation of local jobs, including approximately 200 full-time jobs during the peak construction period;
- ✓ Up to 4 permanent jobs will be required to ensure the effective operation of the solar farm, with further contractor opportunities available;
- ✓ Generation of local economic activity during construction and operations and diversification of local revenue streams;
- ✓ Generation of clean energy to power approximately 55,000 homes; and
- ✓ Increased energy security by contributing to Australia's diversifying energy mix including the provision of grid support / security through an energy storage system.

**ESCO Pacific is committed to engaging with neighbours, local communities and stakeholders throughout the development of the project.**

**Local suppliers and contractors are also encouraged to register their interest and capabilities with us via the Contact Us page on our website.**